

BELA® stand premium

BELA® stand premium

For customers that care for functionality and design

Our latest creation proves that the daily required functionality of a stand can still have an appealing design to it.

- clearance height is only 100 mm
- smooth-running height adjustment
- compatible with most radiators manufactured by other companies
- easily movable
- meets all safety regulations
- tilt resistant up to a 15° inclination
- well-designed and functional

Technical data:

Total weight:	24 kg
Weight without radiator:	14 kg
Total height:	1.465 1.850 mm
Height adjustment:	Adjustable area 385 mm spring-loaded
Foot measurements:	735 x 830 mm
Radiator side arm:	Approximately 500 mm
Rollers:	4 steering rollers with a diameter of 65 mm, two of them are lockable

A NICE STAND



Quality management



The company BELA® lamp fabrication is a traditional business that has manufactured radiators for the health market, especially for the physiotherapy area for more than 80 years.

In 1998 our company was according to the guide lines of 93/42 EWG attachment V certified.

Our quality management obligates us:

- to design innovative and future oriented products
- to exclusively manufacture in Germany
- to provide an excellent price-performance ratio

Sales and distribution only takes place via medical specialist retailers.



Lamp fabrication

Asia-Pacific Sales & Distributor Enquiries:
A Squared Ltd. | 2202 Causeway Bay Plaza One - 489 Hennessy Road - Causeway Bay, Hong Kong
sales@asquared.hk | +852 8191 7646 | +44 20 3290 4717 | +32 50 946 011



Lamp fabrication



Original BELA® infared light radiator BELA® stand premium



established
in 1930

for more than
80 years

The ideal method of heat treatment

Radiation is the ideal method of heat treatment according to the publishers of medical literature who did a rating on the subject of "ideal methods of heat treatment". This rating goes together with our obligating quality management to develop innovative and future oriented products. The use of BELA® infrared light radiators means:

- **one-time investment costs**
- **easy and secure usage**
- **low follow-up costs electricity and every now and then a new bulb**

Infrared light radiation is the best method of heat treatment in comparison to others like fango or water baths.



BELA® infrared light radiator RLE with four infrared light lamps

Original BELA® infrared light radiator

The infrared light radiator is applicable in different sectors:

- **Physical therapy offices and bathing facilities**
- **Doctors' offices and rehabilitation centers**
- **Hospitals and spa houses**
- **Spa and wellness facilities**

Heat treatment with infrared light radiators is gentle on the skin, it stimulates blood circulation of desired body areas, muscles, skin and organs.

BELA® infrared light radiators are equipped with high-quality, 250 watts, infrared light lamps that quickly heat up after the device has been turned on. A complicated and expensive preheating is unnecessary. The lamps can be turned on in groups of two or three. If desired, a single lamp operation is deliverable.

BELA® infrared light radiators are equipped with standard protection against contact. The spotlight heads are easily adjustable so that they stay in the desired position during the heat treatment.

Exklusive product program

BELA® infrared light radiator RLE Combines modern design and unique technique

The device has an out standing and elegant, almost futuristic design to it. The connector that is meant to hold a stand, ceiling or wall arm, as well as the handles and the operator control with digital timer perfectly blend in with the plastic housing.

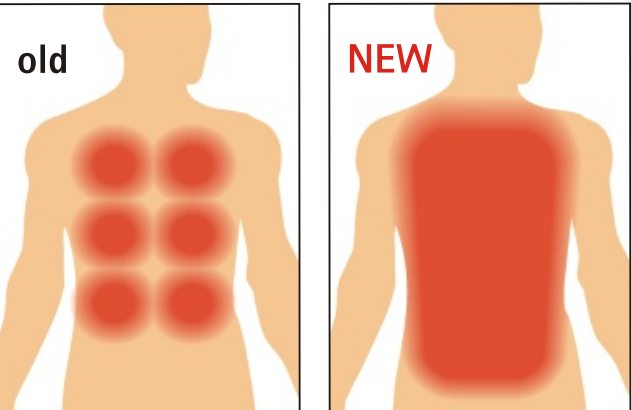
Also, the technical inner workings are new and differ from common devices one can find on the market. The infrared light does not hit the skin directly but is redirected through reflectors to radiate the desired body area. This is what makes a difference because the warmth does not impinge upon the skin point by point but spreads out evenly with an improved level of efficiency on the whole body area that needs to be radiated. The burning sensation patients often described are therefore a thing of the past.

Technical data:

- 4 infrared light lamps each 250 watts
- switchable in two groups
- supply voltage 230 V AC, 50/60 Hz
- noiseless digital timer
- color: translucent white housing, anthracite handles and cover panel



BELA® infrared light radiator RLE with four infrared light lamps



Uncomfortable burning through point by point light distribution

Extensive irradiation through loss-free light distribution



BELA® infrared light radiator RL with six infrared light lamps



BELA® infrared light radiator RLJ with three infrared light lamps

Standard product program

BELA® infrared light radiator RLJ and RL The affordable classic model with metal housing

Technical data:

- 3/6 infrared light lamps each 250 watts
- switchable in three groups two lamps at a time or single ones
- supply voltage 230 V AC, 50/60 Hz
- mechanical timer up to 60 minutes
- color: white

Mounting positions

There are different mounting possibilities available that meet all the different needs of the professional daily practice. All arms have the cables run internally through them. The spring arms are adjustable in any position. All three of the pictured mounting positions can be performed with each model of the Bela infrared light radiators.



Stand model

The BELA® infrared light tube head will be mounted to a short side arm. The height is adjustable from 140 to 200 cm. To slide the foot of the stand under the therapeutic couch, there needs to be a clearance of 12 cm between the floor and the therapeutic couch. Furthermore this model can be secured by a quick adjustment feature that is also equipped with a tiltable swivel joint.

Wall model

The BELA® infrared light tube head will be mounted to a wall arm that reaches far enough to serve two cabins that are next to each other. Due to the tiltable swivel joint, limited circular movements as well as tilts of 50° up and down are possible. The tube head can be swiveled as desired and secured by a quick adjustment.

Ceiling model N/S

The BELA® infrared light tube head will be mounted to a ceiling arm. Two different versions are available. Version N is suitable for a ceiling height of 2,70 m. Version S is suitable for a ceiling height of up to 3,00 m. Other than that, the model is equal to the wall model.